



**iVMS-4200**

**Intelligent Video Management System**

**Quick Start Guide**

## Notices

The information in this documentation is subject to change without notice and does not represent any commitment on behalf of HIKVISION. HIKVISION disclaims any liability whatsoever for incorrect data that may appear in this documentation. The product(s) described in this documentation are furnished subject to a license and may only be used in accordance with the terms and conditions of such license.

Copyright © 2006-2010 by HIKVISION. All rights reserved.

**This documentation is issued in strict confidence and is to be used only for the purposes for which it is supplied.** It may not be reproduced in whole or in part, in any form, or by any means or be used for any other purpose without prior written consent of HIKVISION and then only on the condition that this notice is included in any such reproduction. No information as to the contents or subject matter of this documentation, or any part thereof, or arising directly or indirectly therefrom, shall be given orally or in writing or shall be communicated in any manner whatsoever to any third party being an individual, firm, or company or any employee thereof without the prior written consent of HIKVISION. Use of this product is subject to acceptance of the HIKVISION agreement required to use this product. HIKVISION reserves the right to make changes to its products as circumstances may warrant, without notice.

**This documentation is provided “as-is,” without warranty of any kind.**

Please send any comments regarding the documentation to:

[overseabusiness@hikvision.com](mailto:overseabusiness@hikvision.com)

Find out more about HIKVISION at [www.hikvision.com](http://www.hikvision.com)

# Table of Contents

<b>1. Overview</b> .....	2
<b>2. Installation</b> .....	2
<b>3. Quick Start</b> .....	2
Step1: Login .....	2
Step2: Control Panel.....	2
Step3: DVR Management .....	4
Step4: Record Schedule.....	8
Step5: Live Preview.....	10
Step6: Playback.....	11
Step7: Exit System.....	13

## 1. Overview

---

This Guide provides basic instructions on how to operate the software, live view, record images and play back the recorded video. For detailed instructions on programming and using the software, please refer to the iVMS-4200 User Manual.

## 2. Installation

---

For detailed instructions on how to install the software, please refer to iVMS-4200 User Manual.

## 3. Quick Start

---

### Step1: Login



Double click the shortcut **iVMS-4200** on desktop to run the client software. For the first use of the software, the system will pop up a dialogue box for user to create an administrator for login. Input the user name and password and then click **Login** button to log in the system.

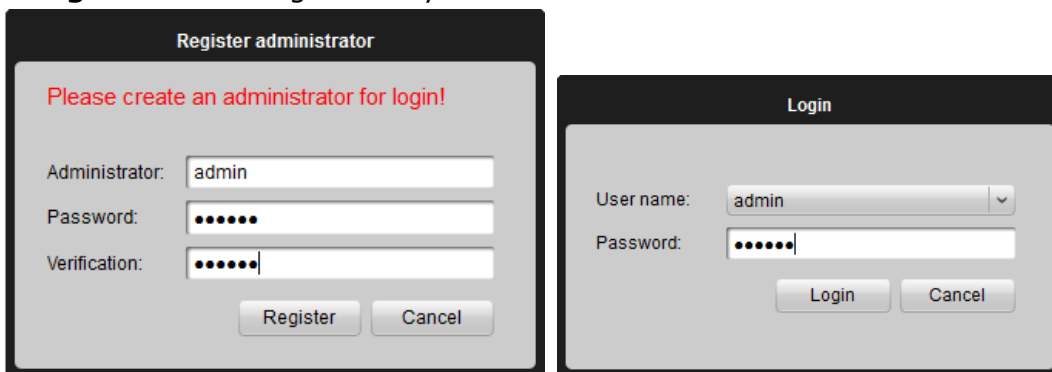


Figure 3-1 Login Dialogue Box

### Step2: Control Panel

After the system initialized (Figure 3-4), user is accessible to the control panel that will display in a new popup window (Figure 3-5).



Figure 3-4 Initializing

iVMS-4200 provides an effective and convenient GUI for user to operate the client software (Figure 3-5).

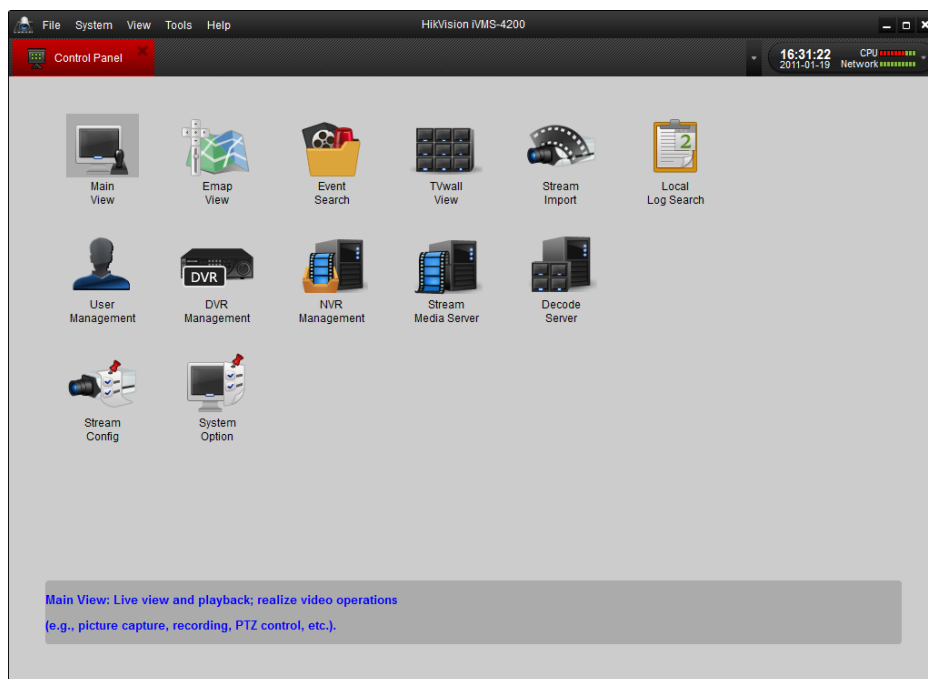


Figure 3-5 Control Panel

Control Panel Description:

Menu	Description
<b>Main View</b>	View live and playback video; realize video operation (e.g., picture capture, recording, PTZ control, etc.).
<b>Emap View</b>	Manage and display Emap and hot spots; realize Emap operation (e.g., operate map zoom in/out, view hot spot, display alarm, etc.)
<b>Event Search</b>	Search and playback of the event record files; realize

	playback operation.
<b>TV Wall View</b>	Configure and operate TV wall.
<b>User Management</b>	Add, modify and delete the user; assign operating permission to each user.
<b>System Option</b>	Configure the general parameters, saving path of files, alarm sound, Email, etc.
<b>Stream Import</b>	Add, modify and delete groups; import/export of stream.
<b>Stream Config</b>	Configure stream parameters (e.g., image quality, record schedule, motion detection, etc.).
<b>DVR Management</b>	Add, modify and delete DVR device; configure parameters (e.g., network, alarm input/output, HDD, etc.) for the added DVR.
<b>NVR Management</b>	Add, modify and delete the storage server; configure parameters (e.g., record schedule, network, HDD, etc.) for the added storage server.
<b>Stream Media Servers</b>	Add, modify and delete the stream media server; configure parameters (e.g., RTSP port, port upper/lower limit, etc.) for the added stream media server.
<b>Hardware Decoders</b>	Add, modify and delete the decoder; configure parameters (e.g., network, alarm input/output, exception, etc.) for the added decoder.
<b>Local Log Search</b>	Local Log Search: Search, view and backup of local logs (alarm, operation, system logs).

## Step3: DVR Management

### Add Device

iVMS-4200 is able to automatically search all the on-line devices within the same gateway. You can add a device either by selecting the listed online device or by manually inputting the name, IP address, port, user name and port of the device (Figure3-6).

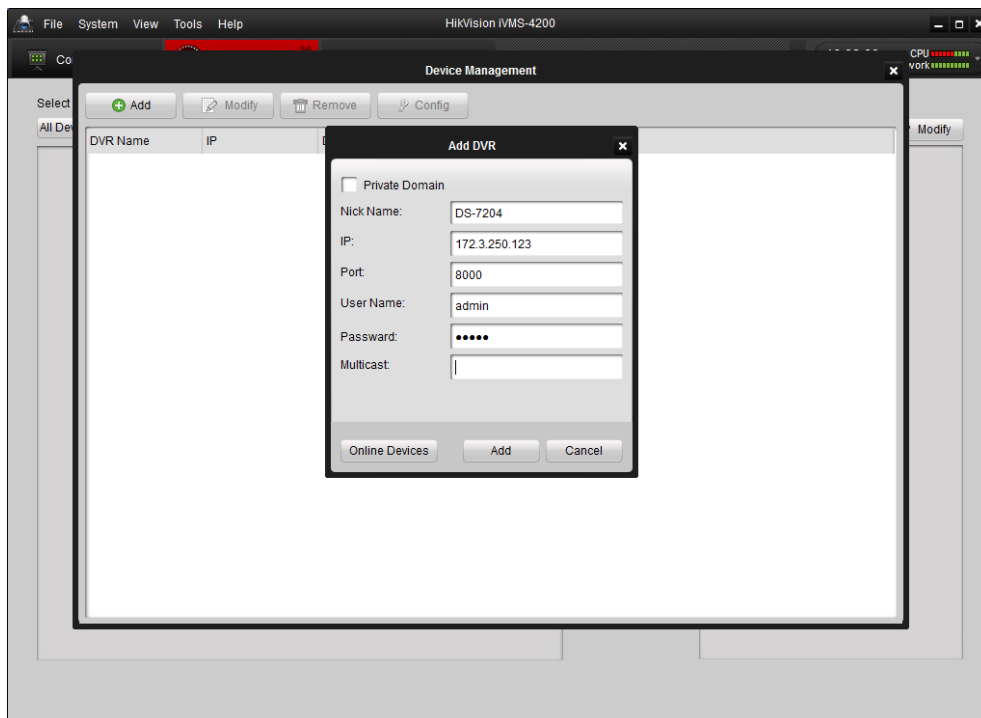


Figure 3-6 DVR Management - Add DVR

After added the device according to the above steps, click **Config** to enter the Device Parameters configuration interface (Figure 3-7). User is allowed to view and configure the following settings: Status, General, Channels, Network, Alarm, User, HDD, Exception, Files, Log and Other.

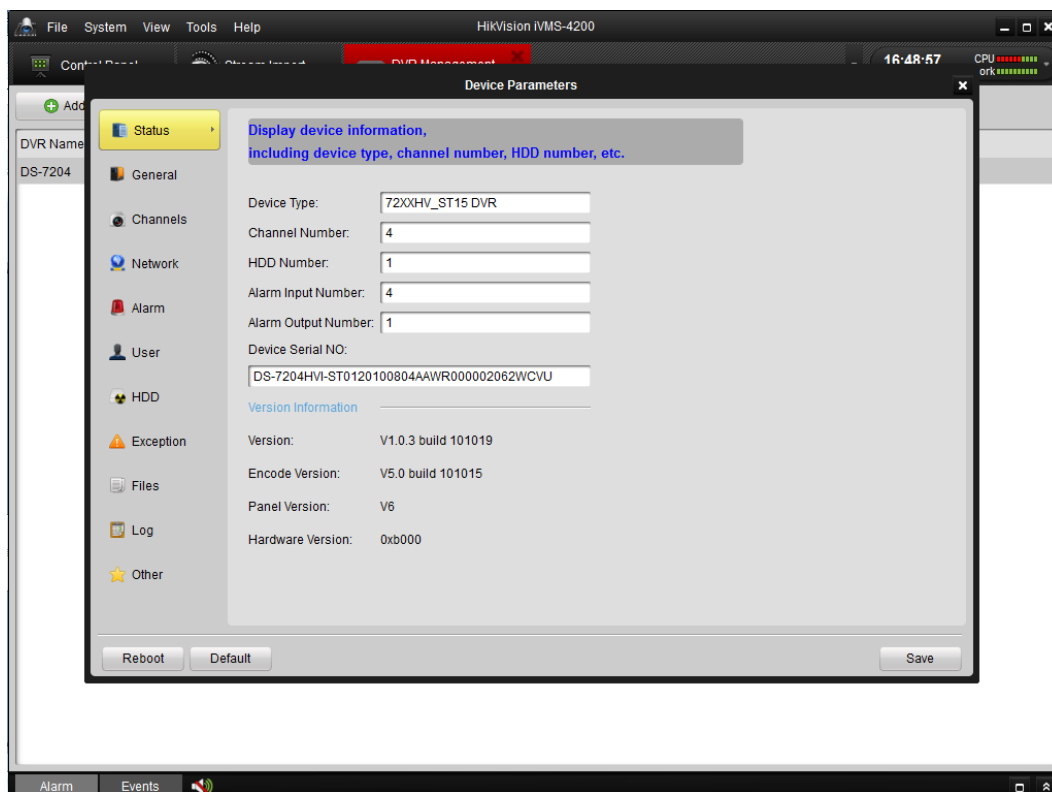


Figure 3-7 Device Parameters

Settings Menu of DVR Management:

Menu	Description
<b>Status</b>	Display device information, including device type, channel number, HDD number, etc.
<b>General</b>	Configure general parameters of device (e.g., device name, device No., etc.).
<b>Channels</b>	Configure channel parameters of device (e.g., enable/disable analog camera, add/modify/delete IP camera, etc.).
<b>Network</b>	Configure network parameters (e.g., IP address, port, Email, etc.).
<b>Alarm</b>	Configure alarm input/output parameters (e.g., alarm input name, alarm input triggering method, alarm arming schedule and actions, etc.).
<b>User</b>	Add, modify and delete the user; assign operating permission to each user.
<b>HDD</b>	Configure HDD parameters; add, modify, delete and format the HDD.
<b>Exception</b>	Configure exception parameters of the device, and set alarm linking method for each exception type.
<b>Files</b>	Search, play and remotely back up the record files of device.
<b>Log</b>	Search and view logs.
<b>Other</b>	Configure other parameters (e.g., RS-232, remote upgrade, etc.).



## Add Camera

After adding the target device, please return to the control panel interface and click **Stream Import** to enter camera group configuration interface (Figure 3-8). And then click **Add** to create a group in the right area (Figure 3-8, Figure 3-9).

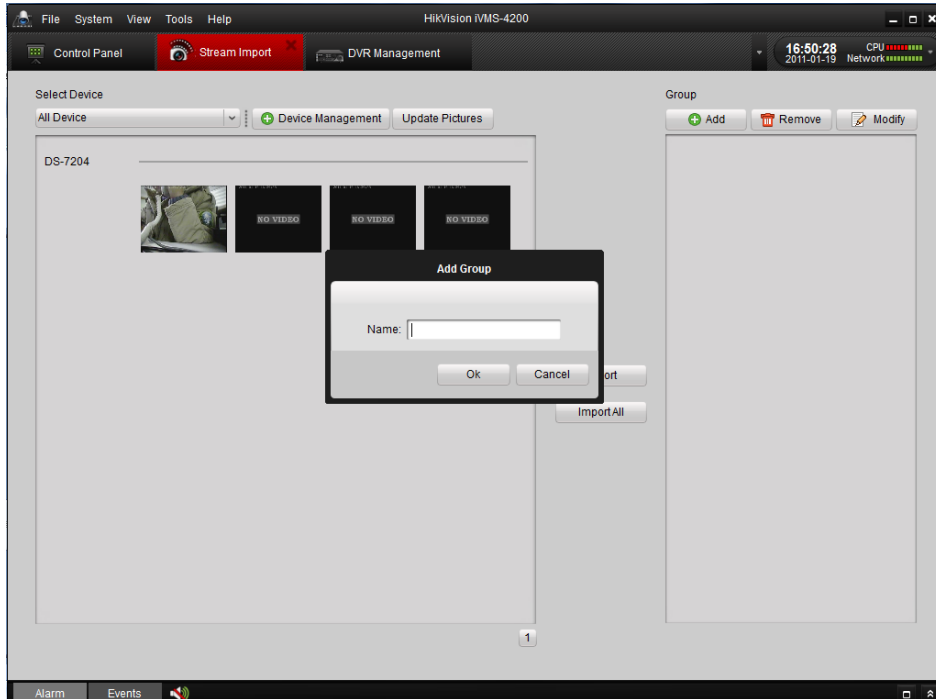


Figure 3-8 Add StreamImport-Group

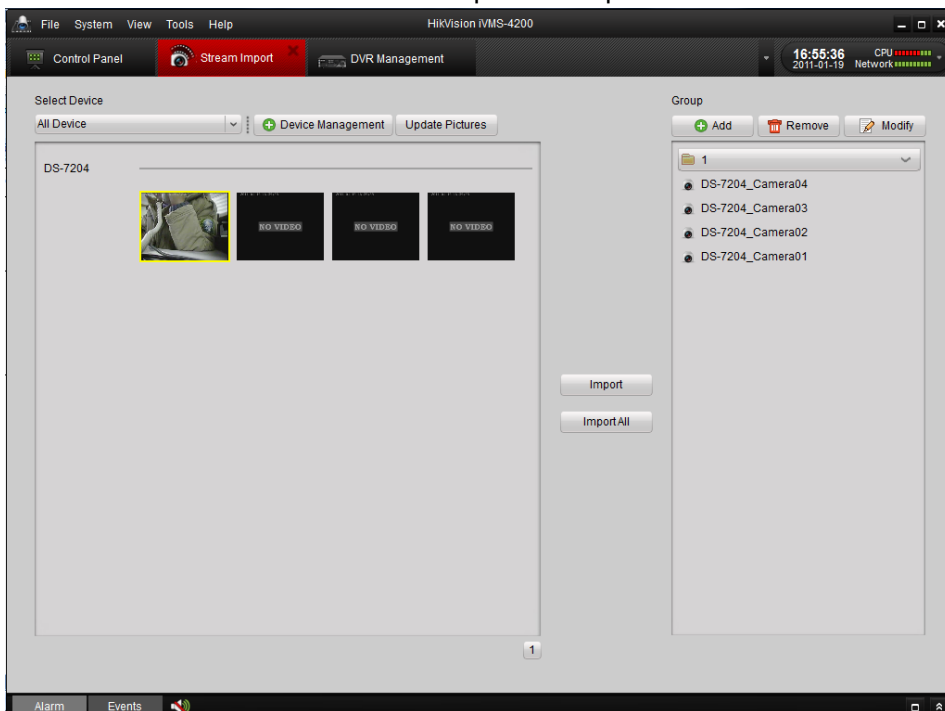


Figure 3-9 Stream Import -Done

## Step4: Recording Schedule

For the recording schedule, you can directly enter camera settings by clicking the **Stream Config** icon on the control panel. The list on the left side provides a set of parameter settings for different channels (Figure 3-10), where **Picture, Resolution & Quality, Schedule, Display, Motion Detection, Video Tampering Detection, Video Loss Detection, PTZ Control** and **Connection** can be configured after clicking on the corresponding icon and entering the configuration interface.

Click **Schedule** in the list on the lower left corner to enter schedule interface. The recording schedule will be displayed afterwards.

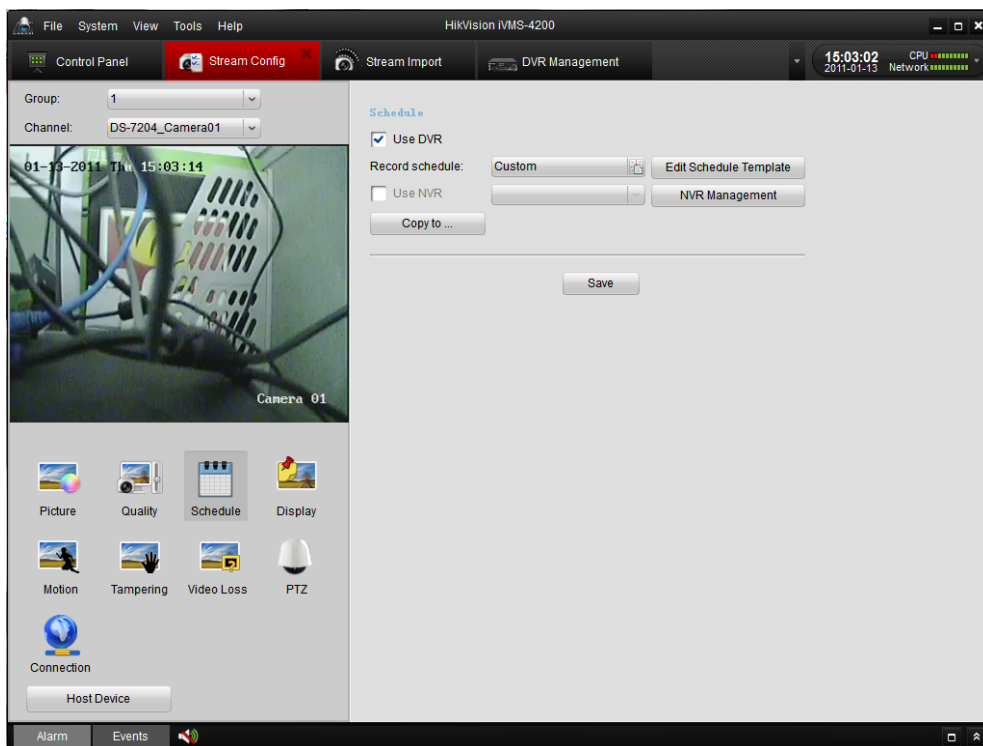


Figure 3-10 Stream Configuration Interface

Click **Edit Schedule Template** to enter the configuration dialogue box (Figure 3-11). For the schedule configuration, this interface provides multiple choices of schedule template with 3 default templates and 8 customized templates (Figure 3-12).

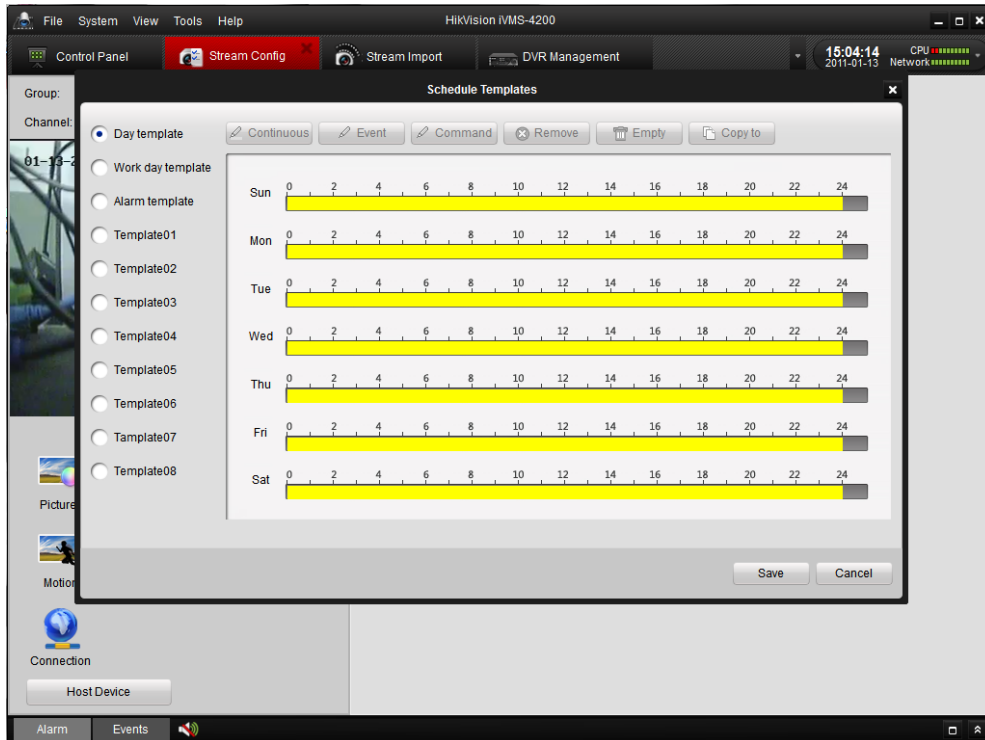


Figure 3-11 Schedule Templates

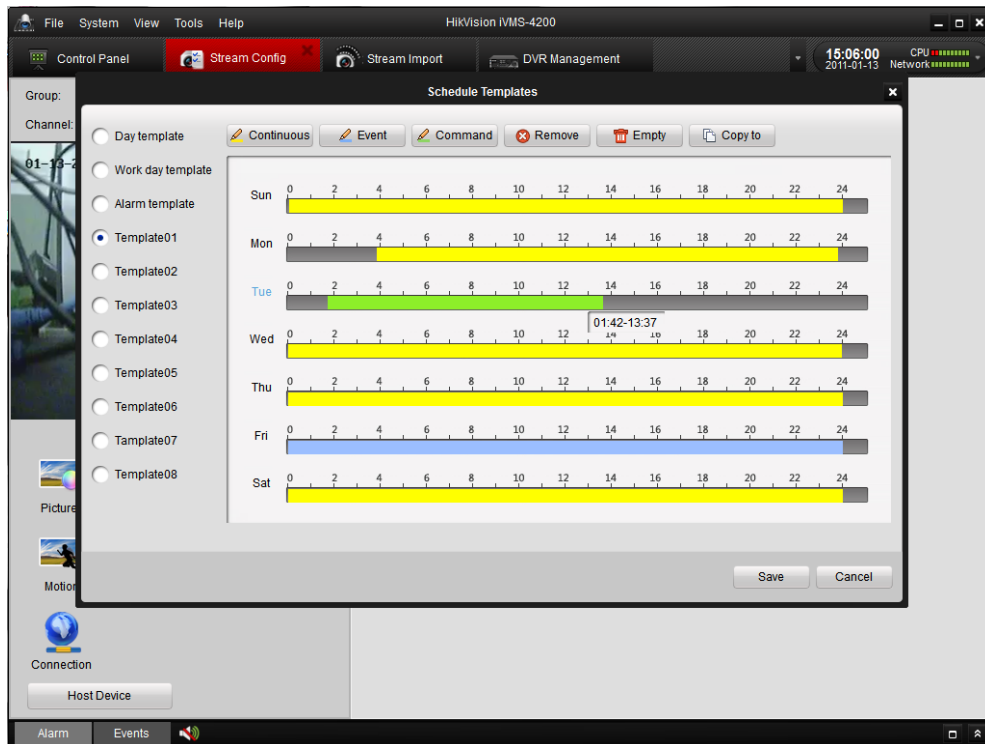


Figure 3-12 Customized Templates

The custom template, continuous, event, command can be configured as below.

- Click **Remove/Empty** to delete existing schedule;
- Click **Continuous/Event/Command** to select Recording Mode;
- Drag the mouse on the schedule to specify a time bar (maximum: 8 bars),

and the length of the time bar can be adjusted and the bar can be copied to other days. Click on the time bar to view the start and end time of this recording period.

## Step5: Live Preview

To preview the live video, drag the camera from the left list to the right display window (Figure 3-13).

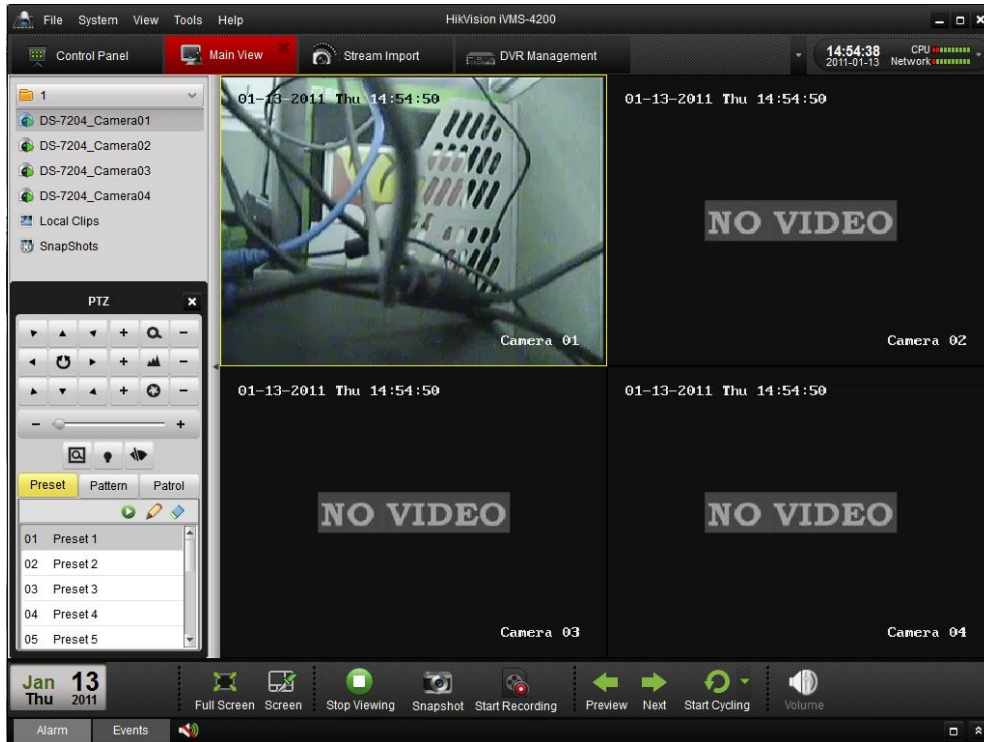


Figure 3-13 Main View


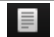




Description of icons in the camera list:

Icon	Description
	Camera is connected and works normally
	Camera is not connected
	Camera is recording
	Stop recording

Tool bar in each display window:











Button	Description
	Picture capture
	Start/stop manual record
	Start/stop voice talk

	PTZ control and 8 directional arrows will be displayed on the video
	View input stream status
	Return to the stream configuration interface
	Stop live view
	Instant playback for the latest 7 minutes recordings of current camera
	Audio button, click to open and close


Main Buttons:



Button	Name	Description
	Layout	Select different layout modes
	Full Screen	Display/restore video in full screen mode
	Close All	Stop the display of all cameras
	Manual Record	Start/stop manual record for the corresponding cameras
	Manual Switch	View previous and next camera
	Auto Switch	Start auto switch by cameras or by groups
	Volume	Adjust the volume of the live audio
	Live Audio	Enable/disable live audio

## Step6: Playback

### Instant Playback

For the instant playback, click  icon from the tool bar on each display window (Figure 3-14). Drag the time line at the bottom of the interface to adjust the progress of video playback (Figure 3-15).

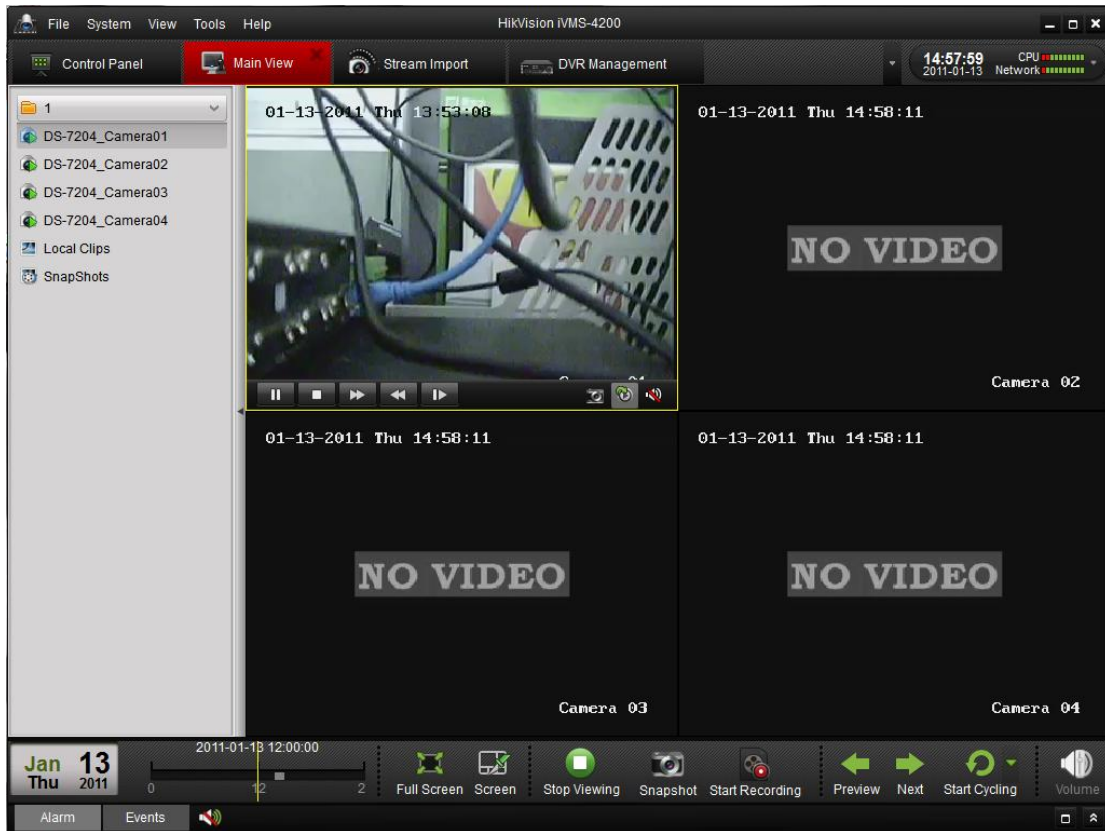


Figure 3-14 Playback - Instant Playback

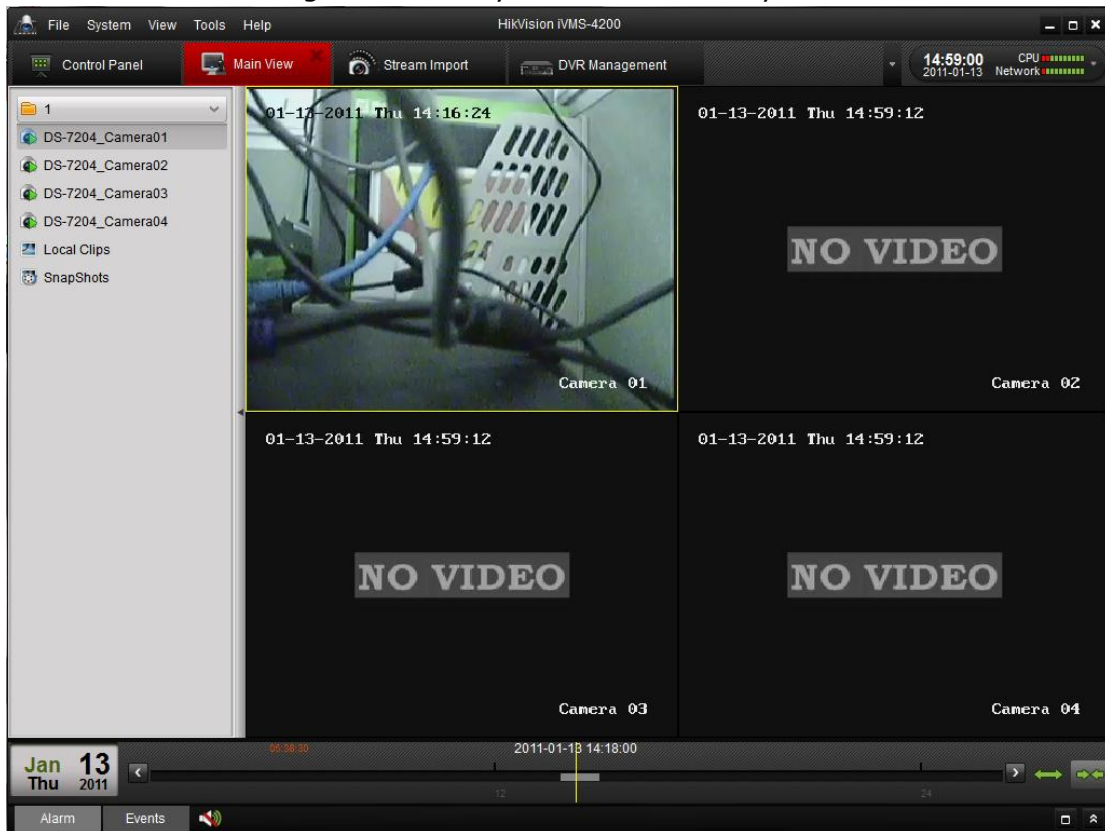
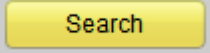



Figure 3-15 Playback - Drag the Time Line

## Event Playback

Check **Event Playback** in **View** menu to enter the **Event Playback** interface (Figure 3-16).

- Select the group to configure device
- Select the cameras
- Set the start time

Click  button to search the recorded files, and the relative video files will be listed in the search results area. Drag the mouse to the display window from the search results list.

Click  buttons to play, pause, stop, or go to the next record file respectively.

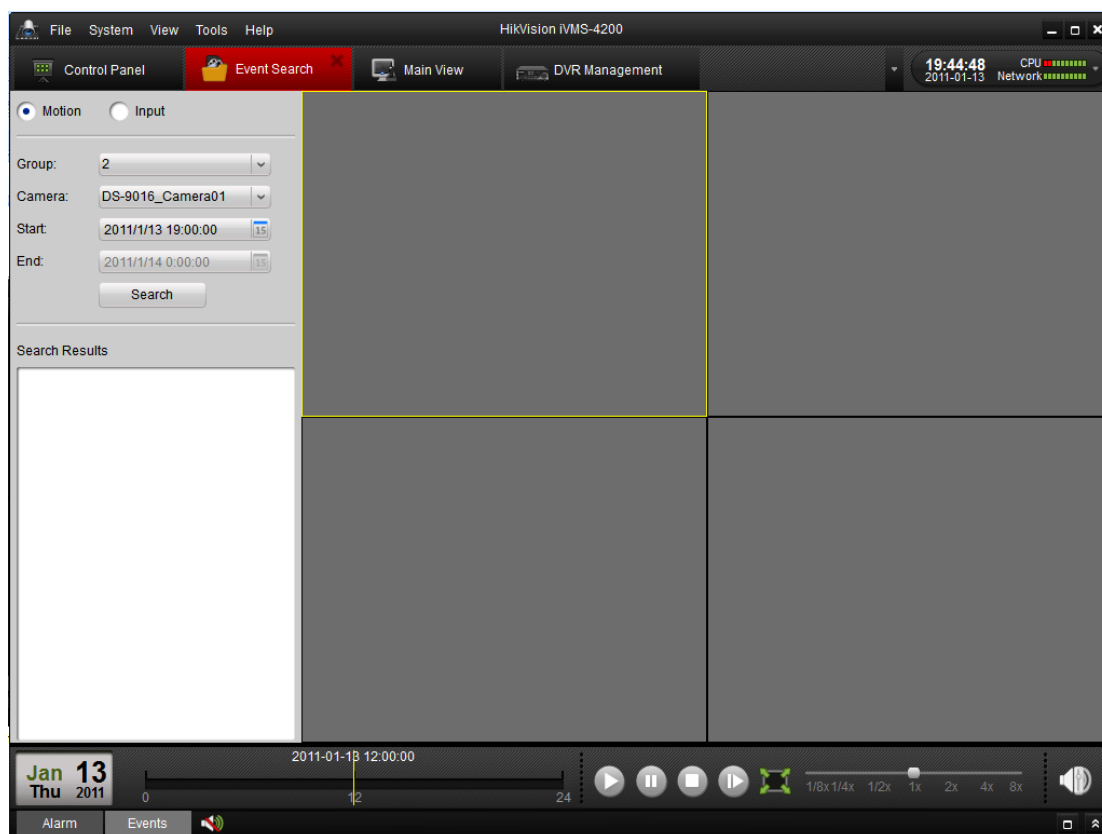



Figure 3-16 Event Search

## Step7: Exit System

Click **File** on the top menu and select **Exit**, or click  on the top right corner of the main interface, and then a confirmation dialog will pop up. Click **OK** to exit iVMS-4200 client software